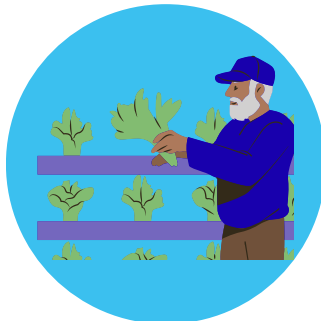


# Coral Coast Hydroponics Farm SUSTAINABLE FRESH GREENS FOR THE CNMI PSS



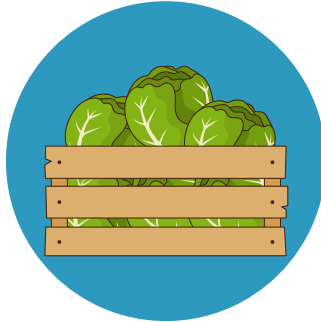
Coral Coast Foundation Corporation (CCFC) established a functional hydroponic farm to grow and serve hydroponic lettuce to reduce reliance on imports and **provide the Public School System (PSS) with access to locally grown, sustainable, and nutritious produce.**

*March 2024 - April 2025*



## 6 LETTUCE HARVESTS

Coral Coast Hydroponics Farm harvested lettuce from June 2024 through April 2025. Partners included the Division of Agriculture and Northern Marianas College – Cooperative Research, Extension and Education Services (CREES).



## 364 LBS DISTRIBUTED

Lettuce was harvested at the Coral Coast Hydroponics Farm and distributed to the Public School System for incorporation into school meals in partnership with the PSS Child Nutrition Program.



## 2,200 STUDENTS SERVED

Students at the Public School System were served the hydroponic lettuce via school lunches. CCFP partnered with PSS school meal vendor Kalayaan, Inc.

“This brings us significantly closer to fulfilling our overall objectives: improving food security, promoting sustainable agricultural practices, and **making nutritious food more accessible within our community.**”

– Coral Coast Foundation Corp.



## CONTACT

**Coral Coast Foundation Corporation**  
[coralcoastfoundation.cnmi@gmail.com](mailto:coralcoastfoundation.cnmi@gmail.com)

**Children's Healthy Living Food Systems**  
Extension and Outreach  
[chlfseo@hawaii.edu](mailto:chlfseo@hawaii.edu)  
<https://www.chl-pacific.org/>

Photo: Official project and ribbon-cutting ceremony within the community at the Coral Coast Hydroponics Farm, Oct 2024.